



The South Bay

HUGHES ROAD

By MESAON Group & Triumph Realty

The Royale Suites

4BHK DUPLEX. 9TH TO 20TH FLOOR. 2429 SQ FT. CARPET AREA

22 STORIES. 16 RESIDENTIAL LEVELS. 11 APARTMENTS. 1 EXCLUSIVE ADDRESS

The Royale Suites

These lavish 4 bedroom duplex apartments are spread across 2429 sq ft. carpet area. These suites offer a very grand and enviable sea facing living room of over 650 sq ft. that overlook the Queen's Necklace, lush green Hanging Gardens, the Babulnath Mandir and the old world Parsi colony. The large kitchen with its connected store and utility space is sure to bring out the chef in you, while the well placed powder bath and luxurious bedrooms highlight the finer nuances of the design. Each of these suites come with a personal home elevator connecting the lower level to the upper. The lower level houses a very beautifully designed spacious master bedroom spread over 520 sq ft. carpet area with a big walk in wardrobe and bath. Residents of these suites also have the entire lift lobby space available to themselves. These duplexes are alternatively spread out over levels 9 to 20. These suites can easily be converted to 5BHK to accommodate larger families.

The Living Room 650 Sq Ft.



The above images are 3D renders of the actual rooms. They are indicative of the aesthetics and décor and are not liable to be provided by the developers. Only bare shell residences will be available on sale.

The Master Bedroom 520 Sq Ft.



The above images are 3D renders of the actual rooms. They are indicative of the aesthetics and décor and are not liable to be provided by the developers. Only bare shell residences will be available on sale.



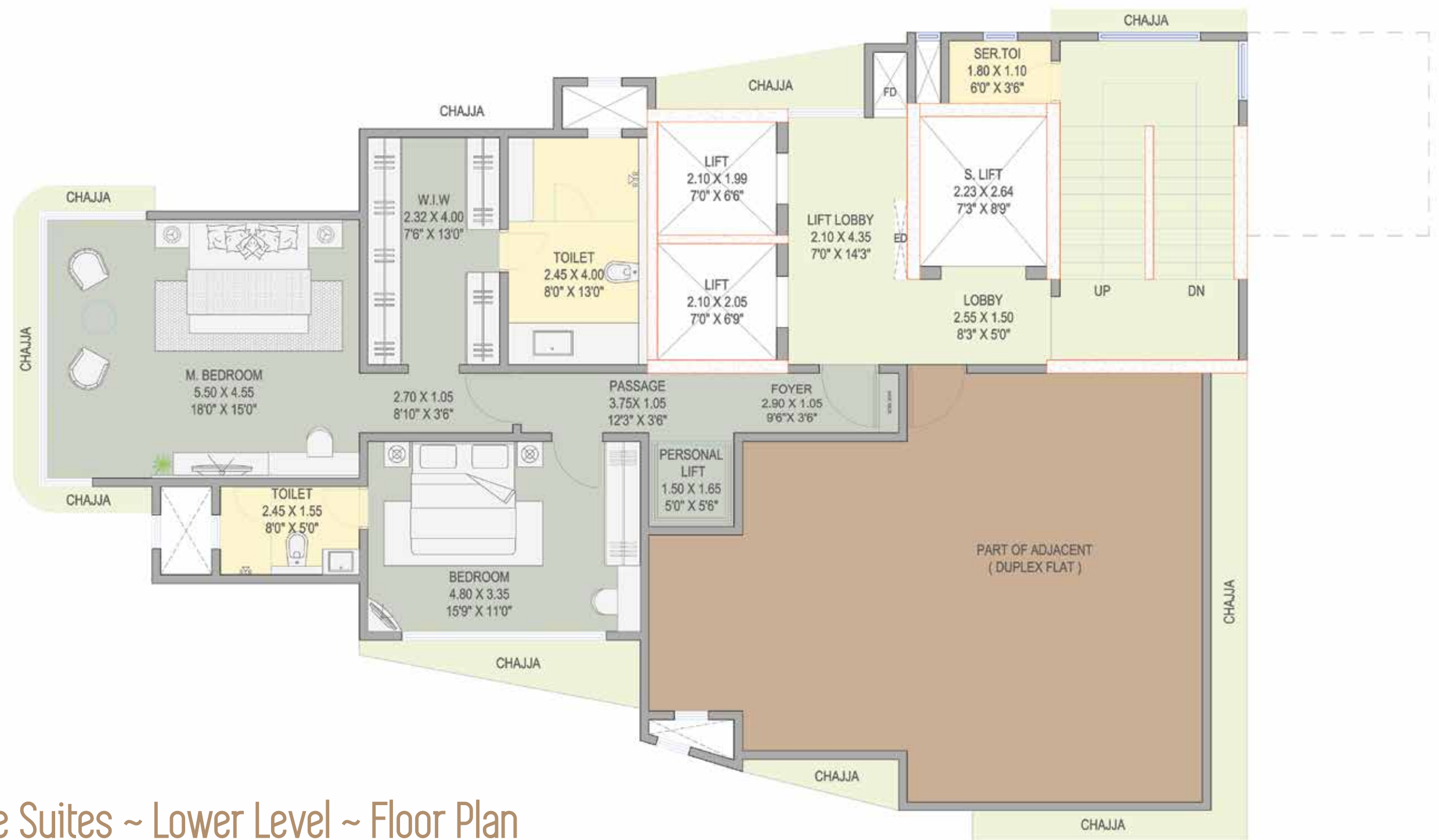
The Royale Suites ~ Upper Level ~ Floor Plan

The furniture shown in the layout is only indicative. Only bare shell residences will be available on sale.



The Royale Suites ~ Upper Level ~ Isometric View

The furniture shown in the layout is only indicative. Only bare shell residences will be available on sale.



The Royale Suites ~ Lower Level ~ Floor Plan

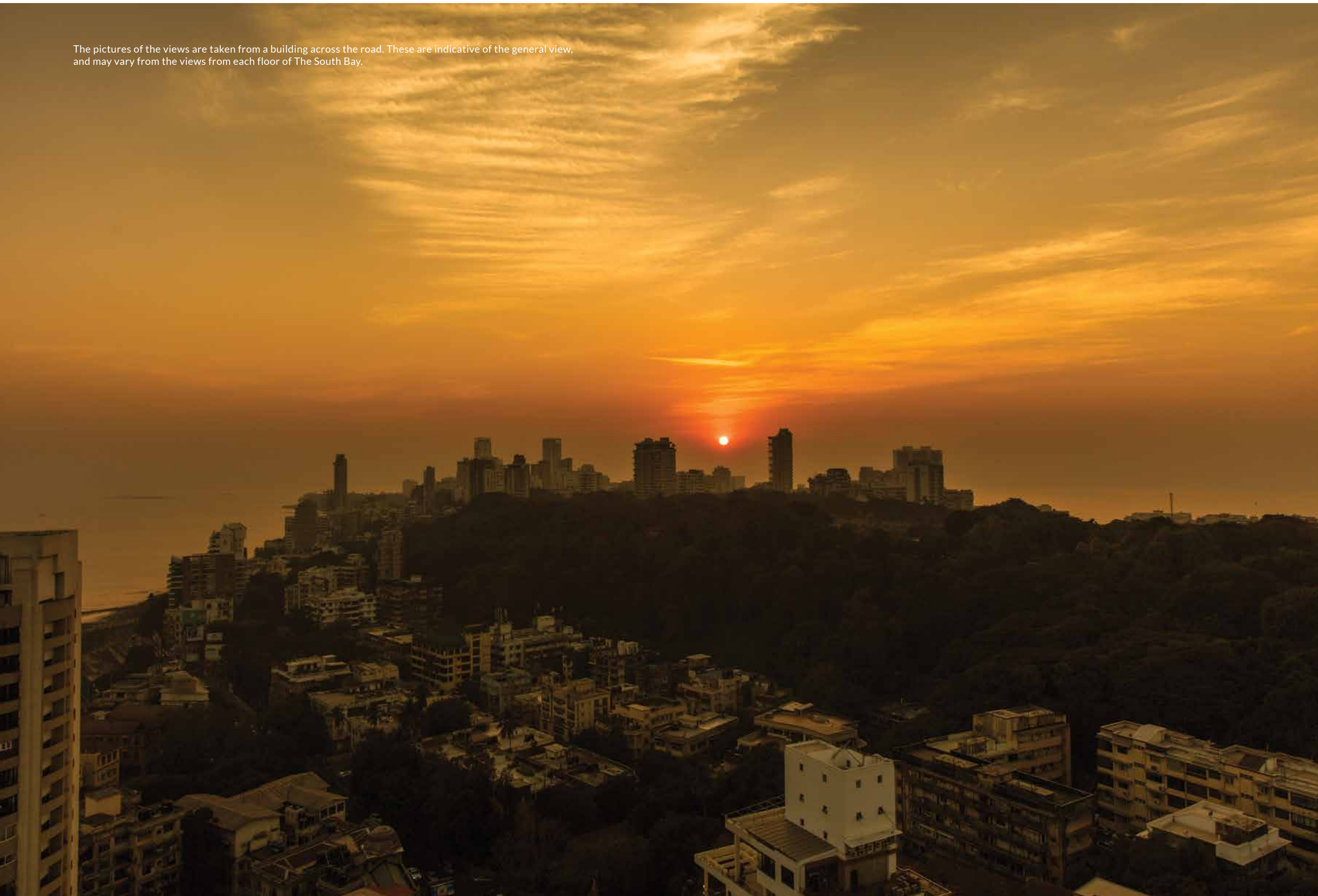
The furniture shown in the layout is only indicative. Only bare shell residences will be available on sale.



The Royale Suites ~ Lower Level ~ Isometric View

The furniture shown in the layout is only indicative. Only bare shell residences will be available on sale.

The pictures of the views are taken from a building across the road. These are indicative of the general view, and may vary from the views from each floor of The South Bay.





MAHARERA Registration No. P51900002722
Also available at website : maharera.mahaonline.gov.in



BUILDING TRUST
MESACON
GROUP

TRIUMPH
REALTY

The South Bay, 31, Hughes Road, Mumbai 400 007
www.thesouthbay.in | +91 70 4512 1282

Disclaimer: The images, perspectives, elevations & specifications contained in this brochure are only indicative. The room dimensions in meters are as per approved plans, the dimensions in feet have been rounded off to the closest inch. The Proposed development and building are subject to approval from the respective Authorities. The Developers reserve the right to make changes or alteration to the design of the flats, building, perspectives, elevations, and specifications at their sole discretion without any prior notice.